

The AsiaFluCap Simulator

QUICK START GUIDE

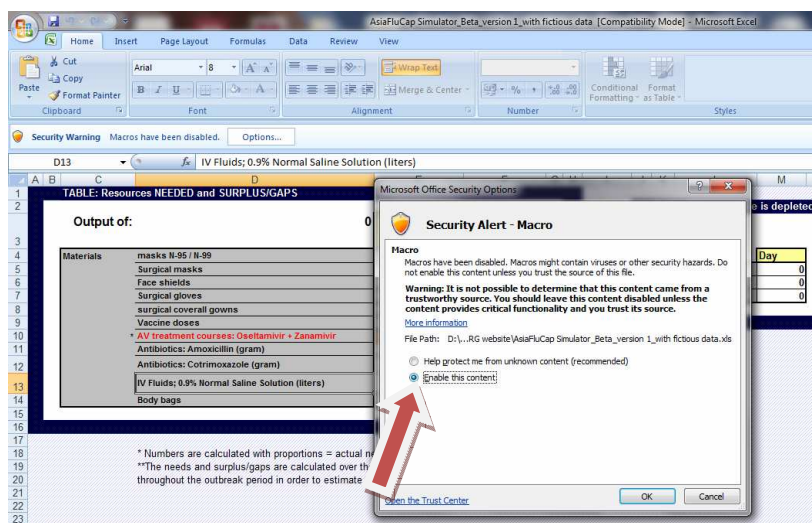
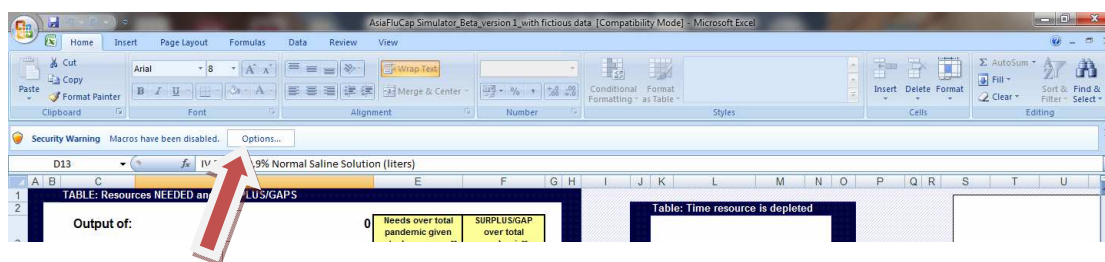
GETTING STARTED IN MS EXCEL 2007 OR HIGHER:

STEP 1 Download AsiaFluCap Simulator_Beta Version file from www.cdprg.org

We recommend downloading the AsiaFluCap Simulator and saving the file to your computer and then open the file from your computer. This will allow the file to open in Excel instead of your web browser.

STEP 2 Open the AsiaFluCap Simulator file and enable macros

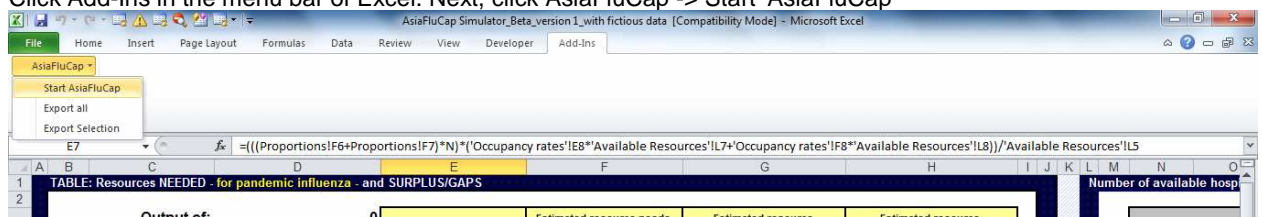
When standard settings are applied in MS Excel, then Excel will display a security warning in the top of your screen, see screenshot below. Click options and then enable this content.*



*In case the security warning is not displayed go to Macro, in the View tab. Go to security and click 'Enable all macros' and click ok.

Step 3 Start the AsiaFluCap Simulator interface

Click Add-Ins in the menu bar of Excel. Next, click AsiaFluCap -> Start 'AsiaFluCap'



GETTING STARTED IN MS EXCEL 2003 OR LOWER:

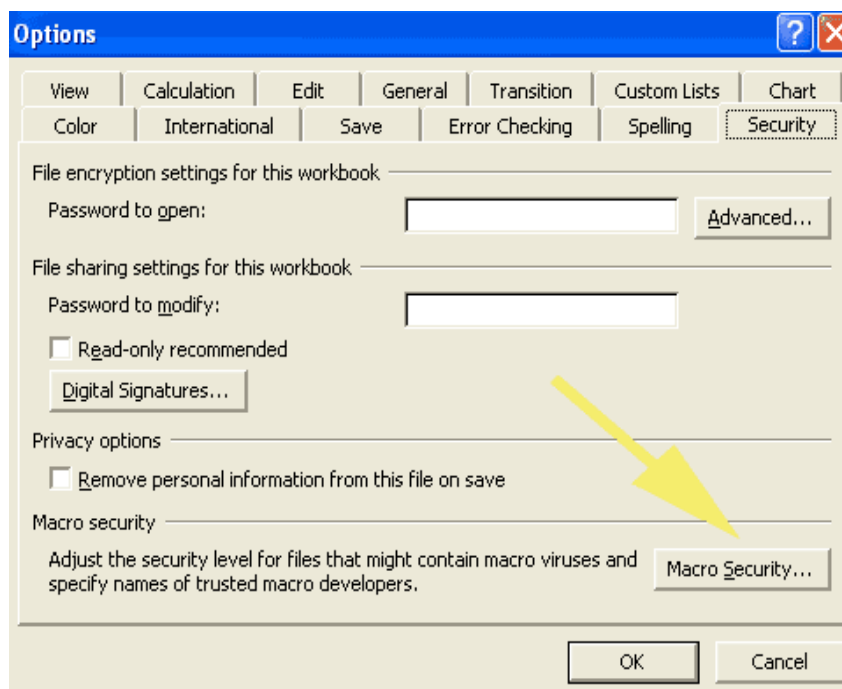
STEP 1 Download AsiaFluCap Simulator_Beta Version file from www.cdprg.org

We recommend downloading the AsiaFluCap Simulator and saving the file to your computer and then open the file from your computer. This will allow the file to open in Excel instead of your web browser.

STEP 2 Open Microsoft Excel and enable macros

Before opening the AsiaFluCap Simulator your macro security has to be lowered to 'medium' or low' security.

- Click Tools in Microsoft Excel (menu bar)
- Click options, the following screen will appear:



- Click Macro Security, then the screen below will appear:



- Select Medium or Low. Then click OK and **C**lose Excel.
- Open the AsiaFluCap Simulator beta version file. You can start the interface by going to 'AsiaFluCap' in the menu bar. Click 'Start AsiaFluCap'.

RUNNING SIMULATIONS WITH THE TOOL

There are two options for running the AsiaFluCap Simulator:

1. **Manually:** You can fill in the availability of the 28 resources by hand, one by one. You can do this by going through the option: 'Fill in data manually'.
2. **Automatically:** if you have data on resource availability for all provinces, or a few, then you can copy this data into the sheet "INPUT DATA AVR". When starting the interface you can run the AsiaFluCap Simulator for one province, for a few provinces or for all provinces at once.

Please note:

- The AsiaFluCap Simulator Beta version contains all provinces in Thailand with fictitious data. You can input your own data set in the "INPUT DATA AVR" tab by removing the Thai provinces and values from the spread sheet.
- When you input you own data, then you need to make sure that the order of the provinces or districts is the same as in the .dbf file of the GIS shapefile that you will use to create maps! (see also below).
- The AsiaFluCap Simulator needs at least information on the population size, and availability of hospital beds and mechanical ventilators in provinces/districts.
- The automatic function of the AsiaFluCap Simulator will only work when there is resource data copied into the INPUT DATA AVR sheet. At least the **red areas** in this sheet will need to be filled in to make sure the AsiaFluCap Simulator can perform simulations.

Changing parameter values

The interface of the simulator provides the possibility to change resource parameter values. By clicking EDIT you can change the values. By clicking RESET, the simulator will put the original values back.

Help buttons

There are help buttons [?] in the interface that explain the functions or parameter values that are displayed.

Simulation output

The output of the simulator will be generated in the sheet 'GIS Output 2'. The other three Excel tabs ('Epidemiology', 'Resource Output 1' and 'Resource Output 2') display the simulation result for one province or district. In case you have runned the simulator for multiple provinces and districts the simulator will only display the last province/district in the list (list from the 'Input data avr').

All simulation results are displayed in tables and graphs.

CREATING MAPS WITH THE SIMULATION RESULTS

The simulation output in the 'GIS Output 2' sheet can be easily exported to GIS software to display the results in maps.

Step 1. Download and install GIS Software

You can create maps with almost all available GIS software. The AsiaFluCap Simulator produces output that is compatible with Open Source software, like the freely available MapWindow (go to www.mapwindow.org).

Step 2. Prepare shapefile

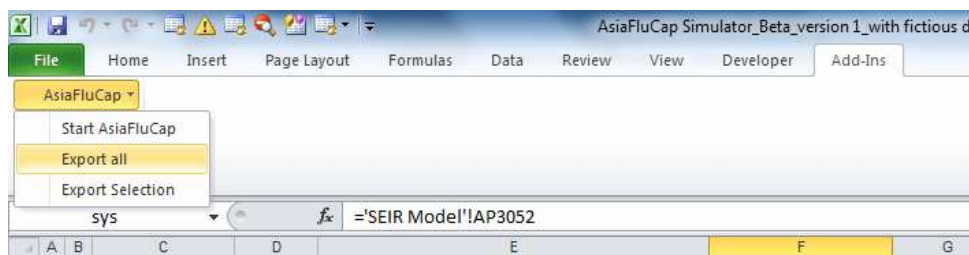
Prepare shapefile by putting the .shp, .shx, and .dbf files in one folder on your computer. On our website (www.cdprg.org) you can download the shapefile for Thailand.

IMPORTANT: when you use your own shapefile, please make sure that you use the order of the provinces/districts in the **dbf file of the shapefile** when you copy data on resource availability into the 'INPUT DATA AVR' sheet. So copy the order of the provinces of the dbf file of the shapefile into the INPUT DATA AVR sheet first, before you start copying data on resource availability into the simulator.

This is because GIS software requires the order of the provinces in the simulator to be the same as in the dbf of the shapefile.

Step 3. Export simulation results with the AsiaFluCap Simulator

You can choose the export all or just a selection of the simulation results that are displayed in the 'GIS Output 2' tab. If you click 'Export Selection' only the yellow areas in the 'GIS Output 2' tab are exported.

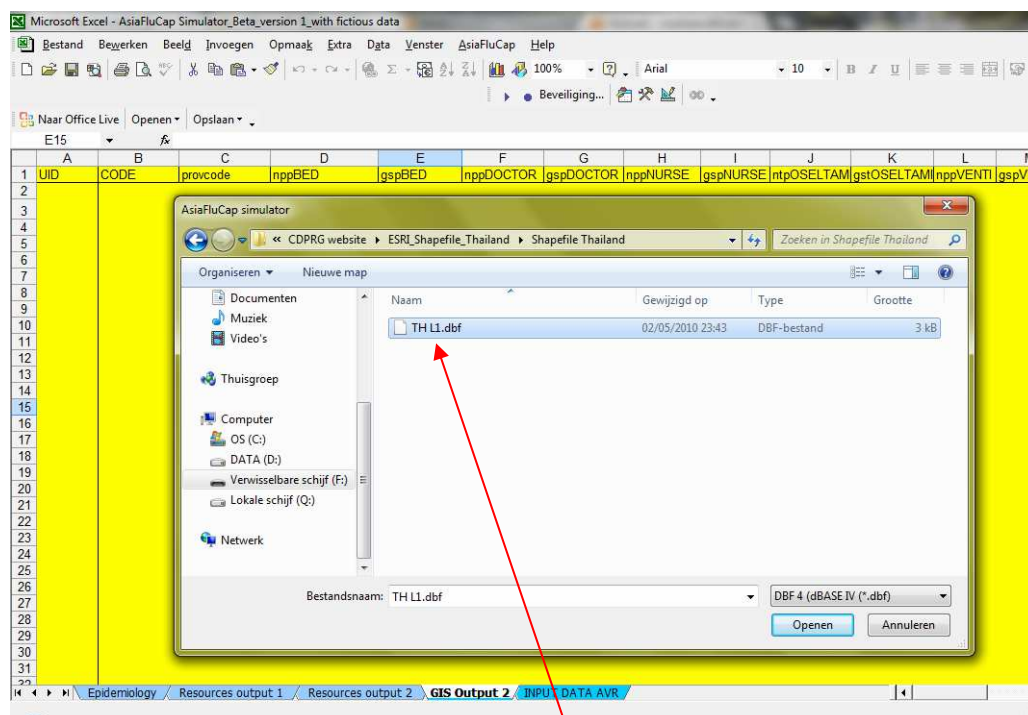


Step 4. Select .dbf file in the shapefile.

When exporting data with the AsiaFluCap Simulator you will need to search for the folder that contains the shapefile that you have prepared in step 2. When you have found the folder containing the shapefile, then double click on the .dbf file. See screenshot below.

The simulator will now automatically replace the 'old .dbf file (that does not contain any data) with the a new .dbf file that contains the simulation results for all provinces. The old dbf file is automatically renamed and stored in the same folder.

Please note: Depending on the settings of your MS Excel, you might encounter a warning about opening files. You can ignore this warning.



DOUBLE CLICK ON DBF FILE

Step 5. Open GIS software and create maps!

You are now ready to create maps. Open the software and add the shapefile. You can display resource needs, gaps and availability in provinces and districts.

For further instructions watch the 'AsiaFluCap Simulator Quick Start Guide' video, with English audio, on the CDPRG website (www.cdprg.org)